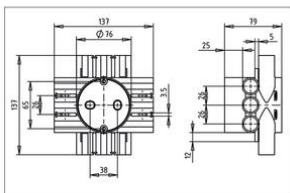


## Fire-resistant central ceiling boxes



### CH75R-BW Ceiling Junctionbox hollow ceiling Ø 16/19 mm

- 60 minutes fire-resistant
- Suitable for rachel ceilings and metal stud ceilings.
- Application: thick(er) ceiling tiles (e.g. 2 x 12.5 mm plasterboard).
- 45% more welding space than a traditional square central box.
- 12 combi spouts 16 and 19 mm.
- Equipped with conical tube inlet with tube snapper.
- Screw slots between the pipe entries.
- Screw cams for bottom mounting.
- Clamps: a 3rd hand for rachels 22 mm.
- Suitable for cable entry in combination with KST (art. no. AT1062).
- Associated lids: art. no. AT5010 and art. no. AT5011

<b>Article no:</b>	<b>AT1006</b>
EAN:	8712259324777
Halogen free	Yes
Amount Packaging	25 st.
Conduit diameter	16 / 19 mm
Ø circular saw	76 mm
Outer size	79 mm
Mounting method	Hollow ceiling
Degree of protection (IP)	IP20
Material	Plastic
Width	
Length	
Diameter	76 mm
Colour	Red
Model	Single
Surface protection	Untreated
Circuit integrity	E60
Cover model	None
Inner depth	77 mm
Degree of protection (NEMA)	-
Equipped with	None
Shape	Round
Suitable for cable diameter	8 - 12 mm
Pipe locking	Yes
Construction type	Central conduit box
Number of inlets	12
Air tight	No
For tube diameter	16/19 mm
Max. conductor cross section	6 mm <sup>2</sup>
Inlet from the rear	No
Transparent cover	No
Cover attachment	Screwed
Sealable	No
With screening	No
Provided with revolving ring	No
Connectable	No

For number of electric fittings	
Mounting switching equipment	-
With screws	No
Housing feed-through by break-out opening	No
Housing feed-through by seal membrane	No
Housing feed-through by nozzle	No
Housing feed-through by step membrane	No
Pipe locking optional	No
Number of included spouts	
Number of poles of the clamp	
Clamp position fixed	No
Luminaire hook mounting	No
Nozzle	Tunnel branch pipe
With nail lugs	No
Special application	Fire protection
Dispatch	25

The fire-resistant central ceiling boxes can be used in any situation in the hollow ceiling construction. In wooden rack ceilings (e.g. 18 mm and 22 mm) and metal Metal Stud ceilings (e.g. 27 mm). Suitable for ceiling plate thicknesses of 9.5 mm, 12.5 mm and 25 mm. Can be used in standard and fire-resistant ceiling constructions. The round shape makes the central boxes easy to install in the ceiling plate. drilling the correct hole diameter (Ø 76mm, see item no. AT2888). The fire-resistant central boxes are equipped with 12 combination outlets. Suitable for 16 or 19 mm tube and cable (using Cable Strain Relief, item no. AT1062). The fire-resistant central boxes can be plugged in with Winsta RD connectors.