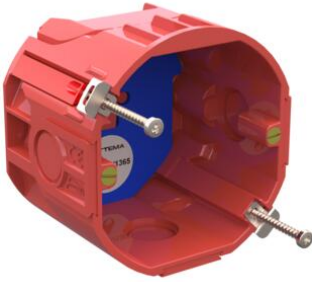


Flush-mounted boxes Solid Wall



UHW50-CLT BW

- Fire resistance tested in a standard metal stud wall.
- Suitable for solid wooden walls.
- Also applicable in hollow walls with a minimum plate thickness of 30 mm.
- Rock-solid mounting in wooden walls, thanks to unique wedge construction.

Article no:	AT1496
EAN:	8712259573205
Halogen free	Yes
Amount Packaging	25 st.
Ø circular saw	76 mm
Centre distance	71 mm
Inner size	50 mm
Fireproof	Yes
Mounting method	Other
Degree of protection (IP)	IP20
Material	Plastic
Width	
Length	
Diameter	76 mm
Colour	Red
Model	Single
Surface protection	Untreated
Circuit integrity	E60
Cover model	None
Inner depth	50 mm
Equipped with	None
Shape	Round
Suitable for cable diameter	6 - 10 mm
Construction type	Device connection box (round/square)
Number of inlets	2
Air tight	Yes
Max. conductor cross section	6 mm ²
Transparent cover	No
Sealable	No
With screening	No
Provided with revolving ring	No
Connectable	Yes
For number of electric fittings	1
Mounting switching equipment	Screwing
With screws	Yes
Housing feed-through by break-out opening	Yes
Housing feed-through by seal membrane	No
Housing feed-through by nozzle	No
Housing feed-through by step membrane	No
Pipe locking optional	No
Number of included spouts	

Number of poles of the clamp	
Clamp position fixed	No
Luminaire hook mounting	No
Nozzle	None
With nail lugs	No
Special application	Fire protection
Dispatch	25

Securing flush-mounted box in wood? You can mount the CLT flush-mounted boxes from Attema firmly in solid and semi-solid walls. With the CLT flush-mounted boxes from Attema, there is now a suitable solution for mounting switchgear in solid walls. The clamping feet of the standard UHW50 boxes have been replaced by an innovative wedge construction.

- Install a flush-mounted box in a wooden wall.
- Rock-solid mounting in wooden walls, thanks to unique wedge construction.
- Directly screwed in a pre-milled hole of Ø 76 mm.
- Attachment with PZ1 screw.
- Also suitable for mounting in semi-solid walls with a panel thickness of 30 mm or more, such as OSB or gypsum fiber panels.
- In addition to the Standard edition, also available in: Fire-resistant, Fire-resistant and smoke-tight, Perilex.