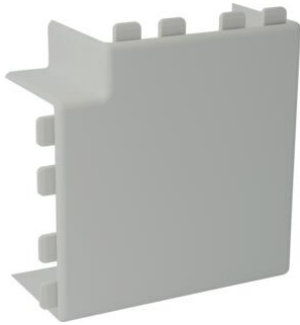


Cable ducts KG

**Flat bend FW for KG 110x60 grey (RAL 7030)**

- Attachment via tabs that fit under the cover.
- Bend overlaps the corner. It is unnecessary to cut perfectly square at exactly the right length.

Article no:	AT2418
EAN:	8712259239293
Colour	-
Amount Packaging	5 x 2 st.
Degree of protection (IP)	-
Material	Plastic
Height	60 mm
Width	110 mm
Halogen free	Yes
Type of fastening	Snap on
RAL-number	7030
Model	Moulded hood
Material quality	Other
Surface protection	Untreated
Anti-bacterial treatment	No
Impact strength	-
Suitable for circuit integrity	Yes
With protective foil	No
Angle	90 - 90 °
Dispatch	10

Attema Cable ducts KG are suitable for the well-organized installation of cables, for guiding heavy power cables or for the supply of power to high-quality computer equipment. The raceways have carefully thought out pre-punched holes for quick, precise positioning. Divider walls can be installed where necessary. All the raceways feature solid cover attachment and are available in a range of colours.