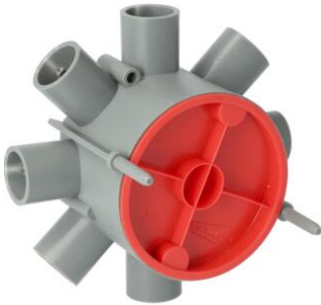


Penvast concrete system junction boxes



PC55 Penvast junction box Ø 19 mm

- Equipped with repositionable mould cover.
- 2 inserts M4.
- 8 numbered conical tube entries with tube snappers closed by breakout ports.
- Associated lids: art. no. AT5010 and art. no. AT5011

Article no:	AT4816
EAN:	8712259004884
Halogen free	Yes
Amount Packaging	100 st.
Conduit diameter	19 mm
Ø drilling hole	5 mm
Inner size	55 mm
Mounting method	Concrete building
Degree of protection (IP)	IP20
Material	Plastic
Width	
Length	
Diameter	77 mm
Colour	Grey
Model	Single
Surface protection	Untreated
Circuit integrity	None
Cover model	Construction protective cover
Inner depth	55 mm
Degree of protection (NEMA)	-
Equipped with	-
Shape	Round
Pipe locking	Yes
Construction type	Central conduit box
Number of inlets	8
Air tight	No
For tube diameter	19 mm
Max. conductor cross section	6 mm ²
Inlet from the rear	No
Transparent cover	No
Cover attachment	Screwed
Sealable	No
With screening	No
Provided with revolving ring	No
Connectable	No
For number of electric fittings	
Mounting switching equipment	-
With screws	No
Housing feed-through by break-out opening	No
Housing feed-through by seal membrane	No
Housing feed-through by nozzle	No

Housing feed-through by step membrane	No
Pipe locking optional	No
Number of included spouts	
Number of poles of the clamp	
Clamp position fixed	No
Luminaire hook mounting	No
Nozzle	Tunnel branch pipe
With nail lugs	No
Special application	-
Dispatch	100

Attema's Penvast® concrete system is used at the construction site and is ideal for repetitive work. After measurement, the holes are drilled and the boxes are installed. Penvast® works exceptionally quickly: for the following pour it is unnecessary to measure again just drill the holes and install the boxes. The boxes remain firmly in place, even if the concrete has not yet hardened completely. The system features a complete range of accessories and few loose parts. It is suitable for both wooden and steel forms. The construction of covers and conduit lead-ins guarantees that the boxes are sealed against concrete water. The conduit lead-ins of all Penvast® boxes are equipped with click connections for automatic, doubt-free conduit connections. The installation can easily be performed by one person. Removal of the forms requires no additional effort. Fixing by means of pins. One-off measuring and drilling of the formwork. Suitable for all types of conventional formwork. Ideal for repetitive work.

- Stripping the formwork does not require any additional effort.
- Attachment by means of pins.
- One-time measuring and drilling of the formwork.
- Suitable for all types of common formwork.
- Ideal for repetitive work.