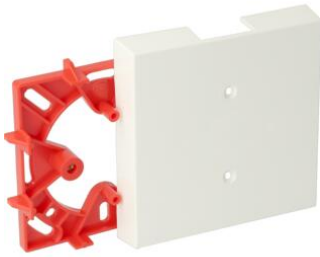


K25/P25 Flat tube system accessories



A25 Expansion box white (RAL 9010)

- Base plate can be mounted on any wall or ceiling junction box.
- Parker screws for attachment of cover are mounted inside cover to prevent loss.
- Surface-mount domestic switching devices can be mounted on cover.
- Cover includes 1 open lead-in and 11 break-outs for K25/P25/Z25 raceways.

Article no:	AT5618
EAN:	8712259005843
Length	90 mm
Width	90 mm
Height	15 mm
Colour	-
Amount Packaging	5 x 10 st.
Degree of protection (IP)	-
Halogen free	Yes
RAL-number	9010
Impact strength	-
Dispatch	50

Attema has expanded its sleek, modern and patented K25/P25 flat tube system with a series of contemporary switchgear, especially suitable for flat tubes. This switching material (in cream and white) is distinguished by its compact dimensions, sleek design, easy processing and of course the top quality that you have come to expect from Attema.