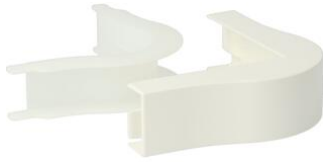


Attachments



Outside corner F25AE white (RAL 9010)

- With special guide piece to bend entire conduit content around corner, with minimal radius of 25 mm.
- Temporary mounting using click attachment to Z25 / F25 conduit. Definitive mounting by means of retaining collars under cover.
- Overlaps the cover 5 mm. It is unnecessary to cut perfectly square at exactly the right length.

Article no:	AT5627
EAN:	8712259273358
Colour	-
Amount Packaging	5 x 5 st.
Degree of protection (IP)	-
Material	Plastic
Height	13 mm
Width	25 mm
Halogen free	Yes
Type of fastening	Snap on
RAL-number	9010
Model	Base unit and cover
Material quality	Other
Surface protection	Untreated
Anti-bacterial treatment	No
Impact strength	-
Suitable for circuit integrity	Yes
With protective foil	No
Angle	90 - 90 °
Dispatch	25

Z25 and F25 are the surface-mounted systems for installation-friendly data cabling. Thanks to the smart accessories, the entire contents of the tubes can be used for data cables up to Ø 10 mm. The handy connectors, branch pieces and end pieces ensure a neat finish.