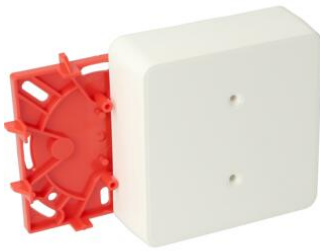


K25/P25 Flat tube system accessories

**VH25 junction box white (RAL 9010)**

- Parker screws for attachment of cover are mounted inside cover to prevent loss.
- Cover includes 5 break-outs for K25/P25/Z25 raceway.

Article no:	AT5728
EAN:	8712259006321
Length	
Width	
Height	30 mm
Colour	-
Amount Packaging	5 x 10 st.
Degree of protection (IP)	-
Material	Plastic
Halogen free	Yes
RAL-number	9010
Impact strength	-
Depth	
Dispatch	50

Attema has expanded its sleek, modern and patented K25/P25 flat tube system with a series of contemporary switchgear, especially suitable for flat tubes. This switching material (in cream and white) is distinguished by its compact dimensions, sleek design, easy processing and of course the top quality that you have come to expect from Attema.