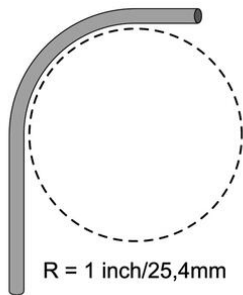
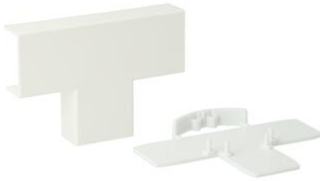


K25/P25 Flat tube system accessories

T25 Tee white (RAL 9010)



- With guide piece that can be fitted with radius protection for ICT cabling (UTP, FTP and STP) in 1 direction.
- Attachment to K25/P25/Z25 conduit using click connection.
- Overlaps the cover 5 mm. It is unnecessary to cut the cover perfectly square at exactly the right length.

Article no:	AT5782
EAN:	8712259006413
Colour	-
Amount Packaging	5 x 10 st.
Degree of protection (IP)	-
Material	Plastic
Height	13 mm
Width	25 mm
Halogen free	Yes
Type of fastening	Snap on
RAL-number	9010
Model	Base unit and cover
Material quality	Other
Surface protection	Untreated
Anti-bacterial treatment	No
Impact strength	-
Suitable for circuit integrity	Yes
With protective foil	No
Outgoing height	
Outgoing width	
Dispatch	50

Attema has expanded its sleek, modern and patented K25/P25 flat tube system with a series of contemporary switchgear, especially suitable for flat tubes. This switching material (in cream and white) is distinguished by its compact dimensions, sleek design, easy processing and of course the top quality that you have come to expect from Attema.