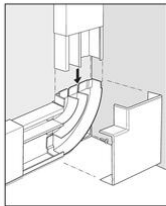
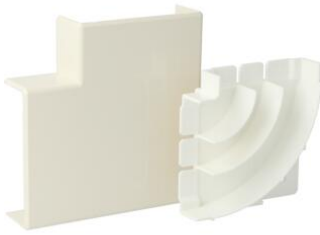


## K40 Plinth System



### FW40 Flat corner cream (RAL 1013)

- Including basic plate for continuous divider walls.
- Skirting duct can be sawn off at a right angle.
- Radius protection R=25 mm for data cables in the outermost two corner compartments.
- Attachment of cap via click connection.
- Overlap with skirting duct is 10 mm. It is unnecessary to cut the skirting duct cover perfectly square at exactly the right length.

<b>Article no:</b>	<b>AT9291</b>
EAN:	8712259254777
Colour	-
Amount Packaging	25 st.
Degree of protection (IP)	-
Material	Plastic
Halogen free	Yes
RAL-number	1013
Model	Base unit and cover
Impact strength	-
Sealing lip cover	None
Decoration	None
With protective foil	No
Height baseboard duct	70 mm
Depth plinth skirting duct	24 mm
With carpet border	No
Dispatch	25

The K40 plinth system has a modern design and includes extremely compact switching devices that lend themselves to the installation of complete surface-mount systems for 230V, low-voltage and data cabling. K40 is easy to mount and install. Thanks to the symmetric cover strip, vertical applications are also possible. It is simple to expand and offers the flexibility of combination with the K25/P25 system. It can also be seamlessly integrated with existing systems. The system is extremely well suited for renovation and changing user requirements. The switching devices can easily be moved. The usable storage area for the wiring remains optimal.

- The K40 system complies with EN 50085-1 and EN 50085-2-1.
- K40 is suitable for installations 16A/250V~.
- Protection class: IP40 (EN 60529).
- Impact resistance: IK07 (EN 50102).
- Minimum temperature for storage and transport: 5 °C.
- Minimum temperature during installation and use: 5 °C.
- Maximum operating temperature: + 60 °C.
- Compartment 1: cross section 350 mm<sup>2</sup>; maximum number of cables: 2x Ø 10 mm or 1x Ø 13 mm.
- Compartment 2: cross section 640 mm<sup>2</sup>; maximum number of cables: 3x Ø 10 mm or 2x Ø 13 mm.